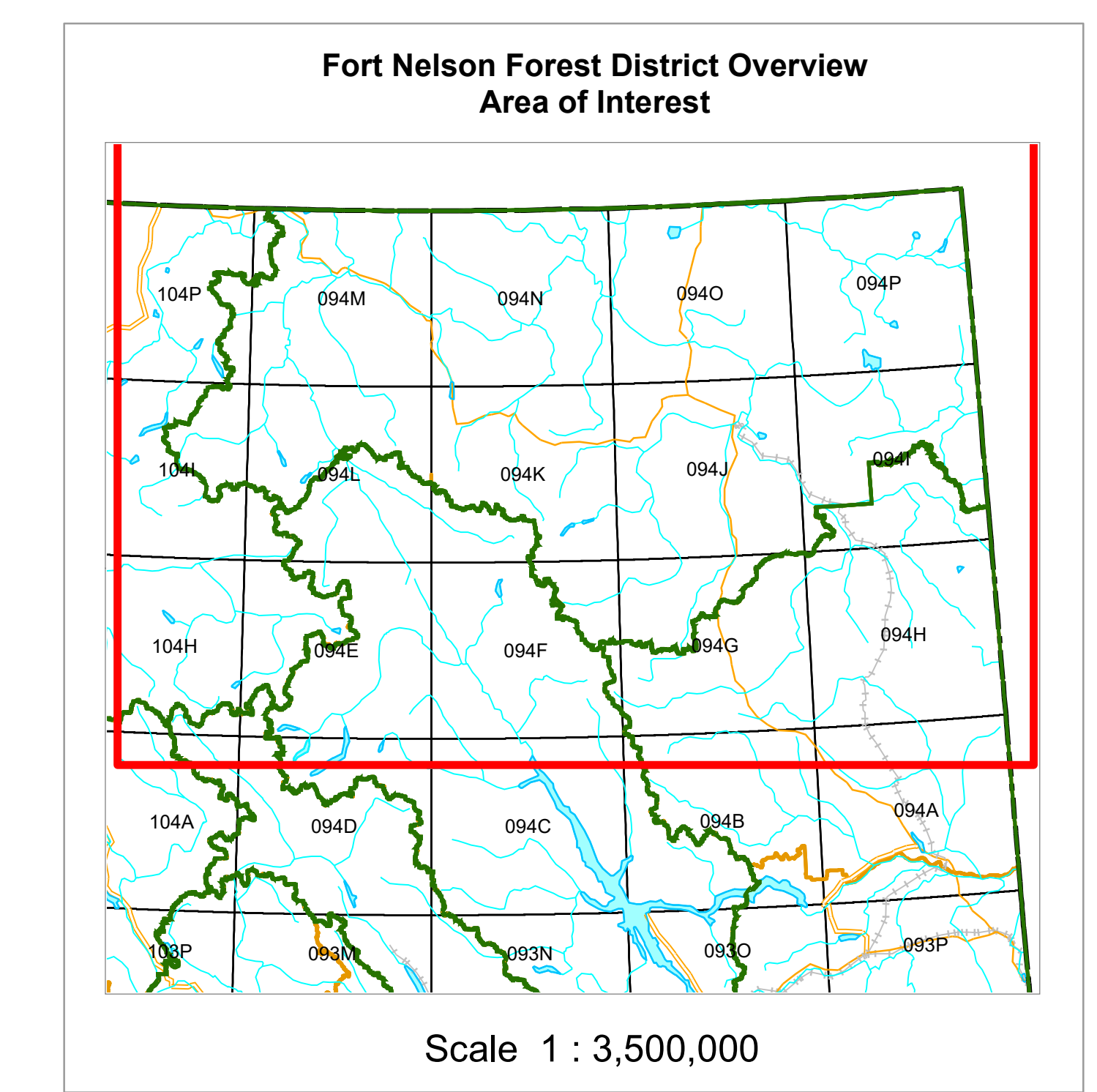


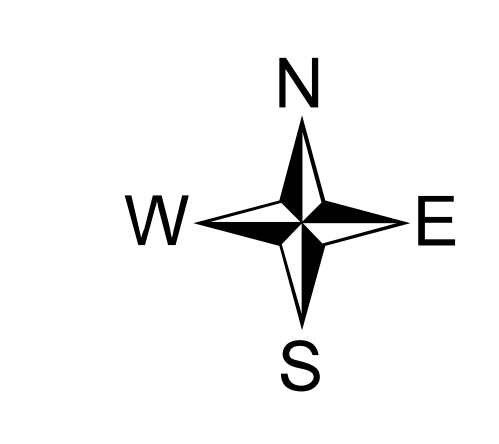
**2019-2024 Forest Stewardship Plan**  
**(2019 Update)**  
**Forest Development Unit Map**

- |  |   |  |
|--|---|--|
| <b>City</b><br>   | <b>Administrative Boundaries</b><br> Timber Supply Area<br> FDU<br> Pipeline Rights of Way<br> Operating Area<br> Indian Reserves - Treaty - LRDW<br> Muskwa-Katikwa Management Area<br> Parks and Protected Areas | <b>Wildlife Habitat Areas</b><br> Black-Throated Green warbler<br> Boreal Caribou<br> Connecticut warbler<br> Data sensitive<br> Fisher<br> Mountain Caribou<br> Northern Caribou |
| <b>Transportation</b><br> Highway<br> Old Alaska HWY<br> Secondary HWY<br> Paved Road<br> Forest Industry Mainlines<br> Forest Service Roads<br> Oil & Gas Industry Roads<br> Seasonal Roads (gravel or other)<br> Airstrip<br> Rail Line - Abandoned Track<br> Transmission Line<br> Gas Line<br> Cable System<br> Woodlots and Community Forest<br> Rocky Mountain Elk Section 7 Habitat<br> Ungulate Winter Range | <b>Water Features</b><br> River or Stream<br> Lake or Mepo River<br><b>Map Grids</b><br> BCGS Grid (20K)<br> MTS Grid (20K)   |  |

- |   |  |
|---|--|
| <b>Visual Quality Objectives</b><br>P - Preserved<br>R - Retained<br>PR - Partially Retained<br>M - Modified<br>MM - Maximally Modified | <b>Visual Sensitivity Ratings</b><br>h - High<br>m - Medium<br>l - Low |
|---|--|



**Fort Nelson Overview**



Scale : 1:440,000

