



SUSTAINABLE FOREST MANAGEMENT PLAN

2009 ANNUAL PERFORMANCE REPORT

Radium Defined Forest Area

Reporting Period

Jan. 1, 2009 - Dec. 31, 2009

Table of Contents

1	Introduction.....	4
2	Overview of Achievements.....	6
3	Ecological Values	7
4	Economic Values	15
5	Social Values	19
6	Summary of Actions and Recommendations.....	26

Executive Summary

This report is the fourth annual report of the Sustainable Forest Management Plan for the Radium defined management area and is for the calendar year of 2009. The report summarizes the progress and performance made by the licensees to achieve the results committed to under the Radium DFA Sustainable Forest Management Plan. Where needed, recommendations are provided to improve the SFM plan and management practices on the ground.

Canadian Forest Products Ltd- Radium (Canfor) and BC Timber Sales-Invermere TSA, are participants and signatories to the SFM plan. Canfor and BCTS are reported separately within the report. Currently, Canfor is certified by third party verification to the ISO 14001 standard and the CSA Z809 SFM standard. BCTS is currently certified to by third party verification to the ISO 14001 standard.

2009 continued to be a financially difficult year for the forest industry. Many factors have impacted Canfor from record low lumber prices, the rise in value of the Canadian dollar to record highs and dramatically decreasing North American housing starts. The Radium sawmill has been indefinitely shut since June 2009.

Mountain pine beetle (MPB) continued to be a great concern for Canfor and BCTS in 2009.

Each value area has a suite of associated measures and targets that the licensees have committed. The following table summarizes the licensees overall achievements of meeting the assigned targets.

Classification	Ecological		Economic		Social	
	Canfor	BCTS	Canfor	BCTS	Canfor	BCTS
Number of Targets Met	23	23	10	9	26	26
Number of Targets Not Met	4	4	6	4	1	1
Number of Targets Pending	5	5	1	1	0	0
Total Number of Targets	32	32	17	14	27	27

1 INTRODUCTION

Jointly BCTS, Canfor and a public advisory group drafted a Sustainable Forest Management Plan developing measures and targets to address a number of established indicators of sustainable forest management. The following documents the current status of meeting those targets

This Document is the fourth annual report of the Sustainable Forest Management Plan (SFMP) of the Radium, British Columbia Defined Forest Area (DFA). The Defined Forest Area is comprised of Canfor and BC Timber Sales operating areas within the Invermere Timber Supply Area. This annual report is an integral part of continual improvement of the 2006 SFMP and is a part of the assessment confirming Canfor implementation of the CSA Z809 SFM standard. The reporting period is January 1, 2009 to December 31, 2009, which provides the status of all measures locally developed through the Sustainable Forest Management Planning process.

Criteria and indicators form the basis of a framework that assesses progress toward achieving the goal of sustainable forest management, where SFM is defined as:

“the balanced and concurrent sustainability of forestry-related ecological, economic and social values for a defined area over a defined time frame.” Source: Radium SFMP

Criteria are meant to be broad management statements describing a desired state or condition. Criteria are validated through the repeated, long-term measurement of associated indicators. They include vital ecological functions and attributes, as well as socio-economic benefits. Considered the foundation of our SFMP the framework of indicators are described and validated by a series of measures as outlined in this report.

Radium DFA Criteria & Indicators

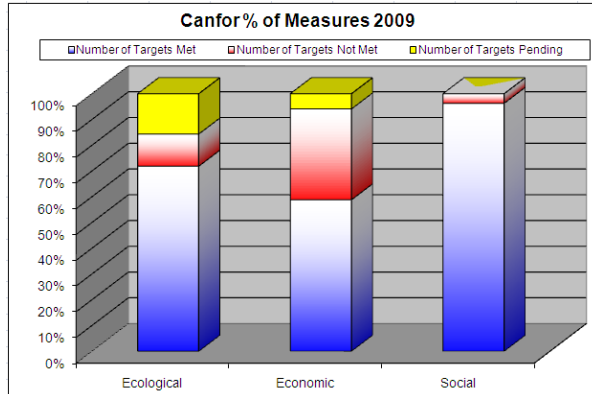
Criterion	Indicator
Ecological Values	
C1. Biological richness and its associated values are sustained in the defined forest area (DFA)	
	1-1. Ecologically distinct habitat types are represented in an unmanaged state in the DFA to sustain lesser known species and ecological function
	1-2. Negative trends in landscape features that affect forest-dwelling organisms are avoided
	1-3. The amount, distribution, and heterogeneity of terrestrial and aquatic habitat type elements and structure important to sustain biological richness are sustained
	1-4. Native forest-dwelling species or species guilds are well distributed throughout their range in the DFA
	1-5. Government designated protected areas and sites of special biological significance are sustained at the site and sub regional level
	1-6. Forest Management activities will conserve the genetic diversity of tree stock
C 2. The productive capability of forest ecosystems within the Timber Harvesting Land Base (THLB) are sustained	
	2-1. Biological components of forest soils are sustained
	2-2. Productive land-base loss as a result of forestry activities is minimized
	2-3. Total growing stock of merchantable and non-merchantable tree species on forest land available for timber production
	2-4. No net detrimental loss in productivity as a result of forest related slope instability
	2-5. Natural disturbance levels and risk levels are managed for such that resistance to catastrophic change and the ability to recover on the landscape level is sustained
C 3. Forest ecosystem contributions to global ecological cycles are sustained within the DFA	
	3-1. The total forest ecosystem biomass and carbon pool is sustained
	3-2. The forest products carbon pool is maintained or increased
	3-3. The processes that take carbon from the atmosphere and store it in forest ecosystems will be sustained
Economic Values	
C 4. The flow of economic benefits derived from management unit forests through the forest industry is sustained	
	4-1. Timber harvesting continues to contribute to economic well-being
	4-2. Citizens continue to receive a portion of the benefits
	4-3. Governments continue to receive a portion of the benefits
	4-4. Opportunities to share a portion of the benefits exist for local First Nations
	4-5. Forest management contributes to a diversified local economy
	4-6. Levels of forest damaging events or agents are managed such that their economic impact is minimized
C 5. The flow of marketed non-timber economic benefits from forests is sustained	
	5-1. Amount and quality of marketed non-timber forest resources is sustained or enhanced over the long-term as a result of forest management activities
C 6. Forest management contributes to a diversified local economy	
	6-1. Employment and income sources and their contribution to the local economy continue to be diversified
Social Values	
C 7. Decisions guiding forest management on the management unit are informed by and respond to a wide range of social and cultural values	
	7-1. Forest management planning adequately reflects the interests and issues raised by the public (tenure holders, residents and interested parties) in the DFA through an effective and meaningful (to all participants) public participation process
	7-2. Community understanding and capacity to participate in forest management planning is improved through information exchange between DFA forest resource managers and the public through a varied and collaborative planning approach in order to facilitate capacity building in the community
C 8. Forest management sustains or enhances the cultural (material and economic), health (physical and spiritual) and capacity benefits that First Nations derive from forest resources	
	8-1. Aboriginal and treaty rights are respected
	8-2. Local management is effective in controlling maintenance of, and access to, resources for First Nations
	8-3. The relationship between forest management and First Nations culture is acknowledged as important
	8-4. First Nations are provided with detailed, reciprocal knowledge pertaining to forest use as well as forest management plans prior to government approval and implementation
C 9. Forest management sustains ongoing opportunities for a range of quality-of-life benefits	
	9-1. Resources and opportunities for recreation (including quality of experience) are maintained or enhanced
	9-2. Visual quality of harvested/managed landscape is acceptable to a broad range of residents, stakeholders and visitors
	9-3. Forest management conserves unique or significant places and features of social, cultural, spiritual importance (including protected areas) at the landscape and site levels
	9-4. Worker and community safety is maintained within acceptable levels
	9-5. Water resources will be sustained by maintaining water quality and quantity for domestic and community watersheds that are licensed for human consumption

2 OVERVIEW OF ACHIEVEMENTS

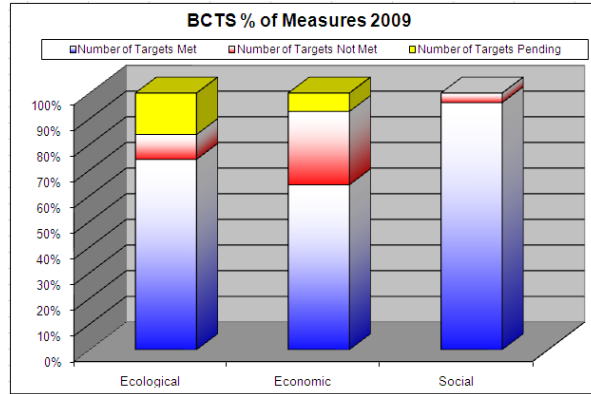
Canfor - For the 2009 reporting year a total of 76 measures were examined. Overall, **59/70** of the measures achieved the targets specified in the SFMP and 6 measures are pending.

BCTS - For the 2009 reporting year a total of 73 measures were examined. Overall, **58/67** of the measures achieved the targets specified in the SFMP and 6 measures are pending.

Canfor's Measures by Element Area



BCTS's Measures by Element Area



Summary of SFMP Accomplishments-CANFOR

SFM Elements	Changed Practice or Increased Knowledge
Ecological – Social	<p>Several new analysis and projects completed in 2009 including ...</p> <ul style="list-style-type: none"> • Range of Natural Variability Analysis – Report examining the RONV within the DFA and strategies for trending towards the RONV where desirable. • Riparian Analysis Phase 2 – Developed regional riparian strategies for the 5 major riparian regions in the Invermere TSA. • Protected Reserves Strategy – Snapshot of surplus and deficit of protected reserves by Biogeoclimatic Variant within the Canfor DFA. • High Conservation Value Forests 4 Preliminary Assessment – Identified forests critical to erosion control, maintaining quality for drinking water, and maintaining water quantity and quality. • Species at Risk Handbook - Developed to assist Canfor's field staff working within the Invermere TSA to identify species and ecological communities identified by Committee on the Status of Endangered Wildlife in Canada (COSEWIC) as endangered, threatened or of special concern as well as by the British Columbia Conservation Data Centre. (CDC) as red- or blue-listed species. • Forecasting new Information and Analysis - In support of the ongoing Sustainable Forest Management Planning (SFMP) process for Canfor's operating area in the Invermere TSA, and in order to prepare for potential certification under the Forest Stewardship Council (FSC), modeling/forecasting of numerous scenarios was completed to illustrate long-term outcomes of management actions.
Social	<ul style="list-style-type: none"> • Maintained certification as a SAFE company with the implementation of a comprehensive health and safety program in sawmill and woodlands operations. Medical Incident Rates (MIR) = 0 over the last 12 months. • Agreed in principle with the Ktanaxa Nation Council on a Communication Protocol Agreement.
Social – Economic	<ul style="list-style-type: none"> • Implemented harvesting agreement with Shuswap Indian Band and finished harvesting on Non Replaceable Forest Licence A81367.

3 ECOLOGICAL VALUES

The following provides specifics of each ecological measure, target and results for both Canfor and BCTS. Where appropriate additional data and recommendations for improvement have been provided.

Measure 1-1.1 Ecosystem Representation

The measure reads “Number Size and type of distinct habitat types in both the THLB and NHLB and recommends proportion of area that should be represented in an unmanaged state.”

Target	Canfor Results	BCTS Results
0 ha of rare ecosystems clusters (<2000ha) will be harvested.	<i>Targets achieved</i>	<i>No harvesting has occurred within rare ecosystems clusters.</i>
For uncommon ecosystem clusters (>2000 ha and <10,000 ha), the amount reserved (or managed to maintain or restore ecosystem function) depends on the area of ecosystem group (See below)	<i>Targets achieved</i>	<i>BCTS has achieved the targets</i>
25% of common ecosystem clusters (>10 000ha) will be reserved or managed to maintain or restore ecosystem function	<i>Targets achieved</i>	<i>BCTS has achieved the targets</i>

Canfor Invermere TSA Ecosystem Representation Targets - March 31, 2007

Rare Ecosystem Groups (<2000ha EKCP)										
Ecosystem Group	EKCP Area (ha)	EKCP Target Res %	EKCP Target (ha)	EKCP NHLB	EKCP THLB Target (ha)	Canfor Area (ha)	Canfor THLB Area	Canfor Resp (%)	Canfor Log Target (ha)	Canfor Harvest 2009 (ha)
2	949	100%	949	232	717	856	35	12.1%	0	0
14	1,645	100%	1,645	480	1,165	0	0	0.0%	0	0
16	368	100%	368	130	237	1031	20	27.6%	0	0
24	1,750	100%	1,750	1,324	426	655	88	24.5%	0	0

Uncommon Ecosystem Groups (>2000ha - <10,000ha EKCP)										
Ecosystem Group	[A] EKCP Area (ha)	EKCP Target Res %	EKCP Target (ha)	EKCP NHLB	[D] EKCP THLB Target (ha)	[B] Canfor Area (ha)	Canfor THLB Area	[C] Canfor Responsibility [B] / [A] (%)	[E] Canfor Res Target (ha) = [C]*[D]	Canfor EG in Natural Condition THLB (ha)
8	4,402	89.9%	3,957	732	3,225	0	0	0.0%	0	0
10	6,702	50.5%	3,385	2,664	721	3,214	1,721	47.9%	345.8	1,327
17	6,526	53.3%	3,476	3,740	0	305	45	4.7%	0	41
18	8,891	31.5%	2,801	4,777	0	1,285	344	14.4%	0	216
19	4,462	89.1%	3,978	4,065	0	2,209	16	49.5%	0	14
29	2,444	99.7%	2,436	1,508	928	370	122	15.1%	55.6	122

Common Ecosystem Groups (>10,000ha EKCP)										
Ecosystem Group	EKCP Area (ha)	EKCP Target Res %	EKCP Target (ha)	EKCP NHLB	EKCP THLB Target (ha)	Canfor Area (ha)	Canfor THLB Area	Canfor Responsibility (%)	Canfor Res Target (ha)	Canfor EG in Natural Condition THLB (ha)
1	73,765	25%	18,441	10,885	7,557	18,757	2,485	25.4%	1,921	2,222
12	10,851	27.1%	2,940	3,330	0	9,920	770	16.7%	0	665
3	237,685	25%	59,421	55,357	4,065	36,533	10,911	15.4%	626	8,862
6	92,710	25%	23,178	29,989	0	22,612	10,721	24.4%	0	8,357
7	315,806	25%	78,952	103,435	0	71,273	37,692	22.6%	0	28,513

Measure 1-2.1 Old and Mature Forests

The measure reads “Percent mature and old seral forest distribution by ecological unit across the DFA.”

Target	Canfor Results	BCTS Results
100% compliance with the mature and old seral targets defined in the KBHLP	100% Compliant	100% Compliant

Measure 1-2.2 Interior Forest Condition

The measure reads “Recommended percent of interior forest by Ecosystem Group across the DFA.”

Target	Canfor Results	BCTS Results
1(0) Report recommending percent of interior forest by Ecosystem Group across the DFA- March 2010	Pending	Pending

Why is this pending? – Limited funds from FIA. Other higher priority projects funded. Other measures in the SFMP do moderate the risk of the values under this measure.

Status of Indicator – There are plans to complete this report within the first 2 years of Radium start-up.

Measure 1-2.3 Road Density

The measure reads “Road densities not to exceed the legal requirements for amounts of roads (permanent access structures 7% provincially)”

Target	DFA Results
5% (+/- 2%) of the THLB	<i>Based on the Roads, Trails and Landings Inventory Project (Timberline, 2008), the percent area of THLB converted to non-forest land use through forest management activities is 7.36% and in the future is expected to be 5.3%.</i>

Why off Target? – This has been of target since the report. This will be updated with the next Timber Supply Review.

What are we doing about it? – Recent Site Plans, and the assumptions used in the project above show this indicator trending towards 5%. New Site Plans minimize permanent access.

Measure 1-2.4 Patch Size Distribution

The measure reads “Percent patch size distribution by natural disturbance type.”

Target	DFA Results
Trend towards patch size distribution targets defined in the LU Planning Guide by Natural Disturbance Type over a 5 yr period	<i>Patch size distributions are trending upwards as shown in the Patch Size Distribution Analysis report (Forsite Consultants, 2004) (See FSP supporting document).</i>

Measure 1-3.1 Significant Habitat Features

The measure reads; “Number, spatial distribution, characteristics and type of significant habitat features in each habitat type as defined below:”

Measure 1-3.1a Dead standing trees on harvested areas in the THLB

Target	Canfor Results	BCTS Results
100% of cutblocks will contain retention areas (consisting of high value existing snags or snag recruitment areas) greater than 0.25 ha such that any clear cut area is no more than 500m from a forest edge.	100% Compliant	BCTS has 100% compliance

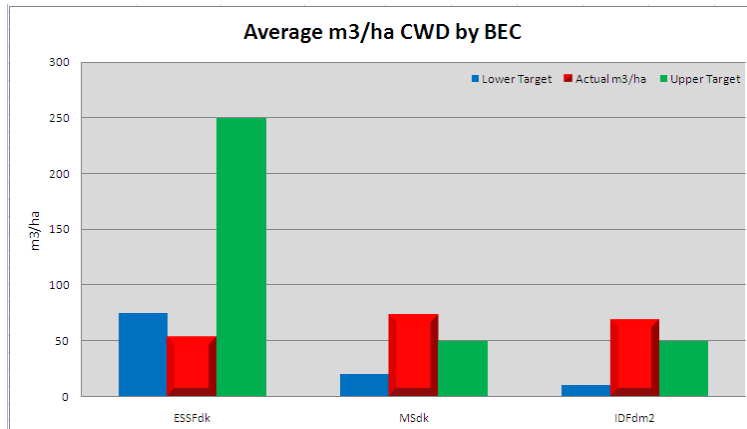
Measure 1-3.1b Stand level retention by Landscape Unit and BEC Variant

Target	Canfor Results	BCTS Results
WTPs will be established consistent with Provincial WTP strategies and Biodiversity guidebook targets. Targets for each LU/BEC combination have been developed. (See SFMP)	100% Compliant	BCTS has 100% compliance

For more information on the results see Invermere Wildlife Tree Retention Analysis Summary Report-Version 1.1- May 23, 2006- Forsite Consultants.

Measure 1-3.1c Coarse Woody Debris (CWD) on harvested areas in the THLB

Target	Canfor Results	BCTS Results
CWD Targets by BEC consistent with Tembec and Canfor research (See SFMP)	<p>ESSF – 53 m³/ha [low]</p> <p>MSdk Pli – 73 m³/ha [high]</p> <p>IDFdm2 – 68 m³/ha [high]</p>	No waste surveys completed in 2009. All of the waste surveys were ocular.



Why off Target? – Pulp hauled off of ESSF blocks. Poor quality high beetle stands measured for MS and IDF. Bucked for quality, used cut-to-length in the bush so more of the logging debris was left in the dispersed area of the blocks.

What are we doing about it? – Meet with operations to discuss and problem solve this issue.

*Measure 1-3.1d Riparian areas in THLB**

Target	Canfor Results	BCTS Results
a) 100% compliance with riparian strategy/standards as defined in approved FSP/FDPs b) Riparian ecosystem types with <2000 ha represented in the East Kootenays will be reserved from harvest.	a) 100% compliance b) 100% compliance	a) 100% compliance b) Not Reported

* Analysis every 5 years - i.e. TSR or major changes to inventory or landbase definition

*Measure 1-3.1e Shrub areas across the CFLB**

Target	DFA Results
Shrub areas greater or equal to baseline levels	Current inventory indicates 34 000 ha (9%) of the DFA's CFLB currently exists in a shrub dominated ecosystem. This is equal to baseline levels.

* Analysis every 5 years - i.e. TSR or major changes to inventory or landbase definition

Measure 1-3.1f Deciduous areas across the CFLB

Target	Canfor Results	BCTS Results
a) 90% of cutblocks with a deciduous component pre-harvest in the THLB will have a deciduous component post-harvest, including mature and regenerating trees	100% compliance.	100% compliance.
b) Track the trend in the NHLB (using updated inventory information)	Current inventory indicates 10 800 ha (4%) of the DFA's CFLB currently exists as deciduous/hardwood species. This is equal to baseline levels.	

Background:

Canfor: About 46% of the strata area surveyed in 2009 had deciduous present

Total Area of Strata with Deciduous present	926.1
# of Regen Perf Survey ha	246.6
# of FG Survey Ha	1748.3
Total Surveyed	1994.9
% of Area Surveyed with deciduous present in Strata	46.4%

Measure 1-4.1 Vertebrate Species-Monitoring Groups

The measure reads; “Number of forest management activities consistent with management strategies for vertebrate species groupings (including Species at Risk and selected focal species).”

Target	Species Group	Canfor Results	BCTS Results
0 non-conformances or non-compliance issues with established management strategies for each species groupings	Group 1	N/A	N/A
	Group 2	Target met	Target met
	Group 3	Target met	Target met
	Group 4	Target met	Target met
	Group 5	Target met	Target met

Measure 1-4.2 Monitoring Selected Vertebrate Species

The measure reads; “Select vertebrate species are chosen to monitor effectiveness of forest planning and practice in sustaining species richness.”

Target	DFA Results
March 2009	Indicator species have been chosen for the DFA with baseline data.

Measure 1-5.1 Parks, reserves, protected areas

The measure reads; “Hectares of forest management activities consistent with the established objectives for parks, reserves, protected areas, biologically significant areas and including areas with specific wildlife management plans.”

Target	Canfor Results	BCTS Results
0 ha in non-compliance	Target met	Target met

Measure 1-6.1 Genetic Variability-Conifer Seeds

The measure reads; “The percentage of seeds for coniferous species collected and seedlings planted in accordance with the Tree Seed and Cone Regulation of Chief Forester’s Standards for Seed Use.”

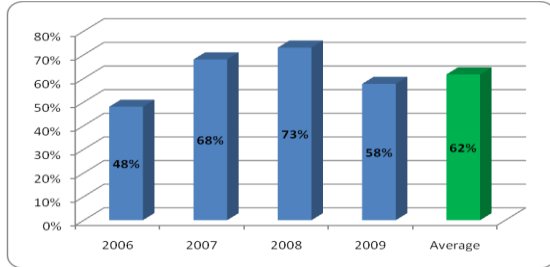
Target	Canfor Results	BCTS Results
0 non-compliance or non-conformances with the standards	Target met	Target met

Measure 1-6.2 Genetic Variability Natural regeneration

The measure reads; “The percentage of natural regeneration.”

Target	Canfor Results	BCTS Results
Greater than or equal to 8% of area harvested will be restocked by natural regeneration over a 5 year period	Target met – 2009 = 58% 4 Yr Average = 62%	Target not met – 2009 = 0%

Canfor Natural Regeneration Stocking Trend



Why off Target? – BCTS blocks did not manage for natural regeneration in the past 5 years.

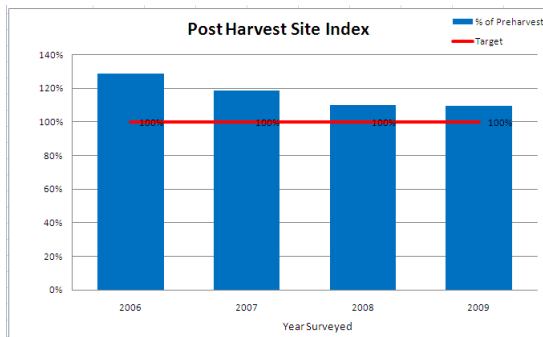
What are we doing about it? – In 2010 blocks are being risk rated and some left for natural regeneration.

Measure 2-1.1 Interim Measure, Site index

The current measure reads; “Site index by inventory type group for harvested areas.”

Target	Canfor Results	BCTS Results
Average post harvest site index (at free growing) will not be less than the average pre-harvest site index on harvested blocks	The average SI post harvest 17.4 is greater than the average SI pre-harvest 15.9 for blocks surveyed in 2009.	No sites were degraded and post harvest SI remained the same as pre harvest.

Canfor trend on Post Harvest Site Index



Measure 2-1.2 Coarse Woody Debris

The measure reads; “Amount of Coarse woody debris remaining on harvested areas.”

Target	DFA Results
CWD Targets by BEC consistent with Tembec and Canfor research	See measure 1-3.1c above.

Measure 2-2.1 Areas converted to non-forest

The measure reads; “Area of THLB converted to non-forest land use through forest management activities.”

Target	DFA Results
Target of 5% (+/-2%) of THLB	See tables for measure 1-2.3 above.

Measure 2-2.2 Roads and Landings

The measure reads; “The percent of cutblock area having roads/landings constructed due to forest management activities as a measure.”

Target	Canfor Results	BCTS Results
Legal limit of <7% of cutblock	Target met 5.9%.	Target met <7.0%.

Measure 2-2.3 Long-term Detrimental Soil Disturbance.

The measure reads; “The percent of long term detrimental soil disturbance as a result of forest management activities.”

Target	Canfor Results	BCTS Results
1) Landscape: Average 4.5% (+/2%) all cutblocks over a 5 year period.	Pending 5 years worth of data.	Pending 5 years worth of data.
2) Stand: For a cutblock, 10% disturbance on high hazard areas and 5% on very high hazard areas as defined in soil conservation guidebook.	High Hazard Areas = 4.8% Very High Hazard Areas = N/A	All BCTS harvested blocks were below the thresholds.

Why is this pending? – Still accumulating base line data as this is a 5 year measure.

Status of Indicator – This will be reported in the 2011 Annual Report.

Measure 2-3.1 Regeneration Delay Period

The measure reads; “Regeneration delay period.”

Target	Canfor Results	BCTS Results
0 non-compliance or non-conformance with Regeneration Delay period as specified in each Site Plan	Target met.	Target met.

Measure 2-3.2 Regeneration Standards

The measure reads; “Compliance with regeneration standards set in FDP/FSP.”

Target	Canfor Results	BCTS Results
0 non-compliance or non-conformance with the standards	Target met	Target met

Measure 2-3.3 Free Growing

The measure reads; “Compliance with free growing requirements.”

Target	Canfor Results	BCTS Results
0 non-compliance or non-conformance	Target met	Target met

Measure 2-4.1 Landslides

The measure reads; “Number of hectares of landslides resulting from forestry practices.”

Target	Canfor Results	BCTS Results
0 ha in THLB (for slides >0.5 ha in size)	Target met – There were 2 recorded landslides not associated with harvesting	100% compliance- In 2009 no landslide incidents have occurred as a result of harvesting practices.

Measure 2-5.1 Natural Disturbance Damaging Events

The measure reads; “The percentage of significant detected natural disturbance damaging events in the THLB which have treatment plans prepared and implemented.”

Target	DFA Results
1 strategy exists per damaging event or agent	The Rocky Mountain Forest District has prepared an Invermere TSA Forest Health Strategy, Feb 6, 2008. This plan documents the significant natural disturbance damaging events and strategies for each event.

Measure 3-1.1 Carbon Stored in Trees

The measure reads; “Estimated amount of carbon stored in trees in the DFA’s CFLB (converted from TSR m3/ha)”

Target	DFA Results
Baseline (of 39.1-51.3 MT) sustained or increasing trend.	Forecasts show a general decrease trend from in the long-term tree storage of carbon in the CFLB for base case scenario TSR3.

Measure 3-1.2 Estimated Carbon in non-tree Vegetation

The measure reads; “Estimated carbon in non-tree vegetation (above ground biomass and roots).”

Target	DFA Results
TBD	Pending - A target for this measure has not been developed at this time.

Why is Carbon pending? –There is much beyond our control on how this will be measured. It is desirable to measure this consistently across the province. Holding off on target until this is settled.

Status of Indicator – Carbon is at its maximum storage over the TSA as per the Carbon Phase 2 Report

Measure 3-2.1 Carbon Pool-Forest Products

The measure reads; “Plan to plan based on report and process being developed by Canadian Forest Service.”

Target	DFA Results
TBD	Pending - A target for this measure has not been developed at this time.

Measure 3-3.1 Carbon Sequestration

The measures reads “Average Carbon Sequestration rate in the ecosystems in the DFA (Mg C/year).”

Target	DFA Results
TBD	Pending - A target for this measure has not been developed at this time.

4 ECONOMIC VALUES

The Radium Sustainable Forest Management Plan included 20 measures to evaluate economical criteria. The following provides specifics of each measure, target and results for both Canfor and BCTS.

Measure 4-1.1 Projected timber supply over time is stable

The Measure reads; *“Projected timber supply over time is stable.”*

Target	Results
321,094 m ³ (+/- 10%)	<i>The current AAC for the DFA allows 321,094 m³/yr (effective November 1, 2005) of harvest volume and is projected to remain stable or increase during the planning horizon (base case scenario). The base case has been updated to reflect recent change to Ungulate winter range and caribou habitat reserves.</i> <i>In September 2009, the Chief Forester of BC determined the AAC for the Invermere TSA is unlikely to change and extended the next TSR to a date prior to November 1, 2015.</i>

Measure 4-1.2 Actual Harvest Volume

The measure reads; *“Actual harvest volume is meeting the timber supply allocation within cut control limits.”*

Target	Canfor Results	BCTS Results
+/- 10% of AAC over 5 years	<i>Estimated 2009 Cut Control harvest 77,613m³ or 35% of AAC</i> <i>5 year cut control period is at 99%.</i>	<i>For calendar year 2009 BCTS scaled 61,939.</i> <i>In time a 5-year average on reported out volume will be established.</i>

Measure 4-1.3 Percentage Harvested Area Regenerated to Target Species

The measure reads; *“Percentage of harvested area in compliance with regeneration standards set in FSP.”*

Target	Canfor Results	BCTS Results
100% compliant	<i>Target met.</i>	<i>Target met.</i>

Measure 4-2.1 Direct Employment in the Forest Sector

The measure reads; *“Employment in each forestry sub-sector locally, regionally and provincially.”*

Target	Results
Local/Regional – 169 py Provincial – 239 py (+/- 10%)	<i>Local/Regional- 76</i> <i>Provincial- 107</i>

Background Info

Local employment statistics used the regional multiplier with the DFA harvest levels. Regional and provincial employment statistics used the TSA harvest levels and the appropriate multiplier from TSR3 reporting (person years per 1000 m³ harvested).

Local/regional = 0.545 PY's/'000m³

Provincial = 0.77 PY's/'000m³ (includes local/regional)

Annual harvest and employment, Invermere TSA 2009

	Canfor Result	BCTS Results	DFA Total
Harvest	Timber volume (m ³)	Timber volume (m ³)	Volume
Allowable Annual Cut (AAC)	221,005	90,089	318,078
Harvested 2009	77,613	61,939	139,552

Why off Target? – Radium Indefinite closure reduced actual cut in 2009.

What are we doing about it? – Keeping the mill and woodlands “start ready”.

Measure 4-2.2 Direct Income in the Forest Sector

The measure reads; “Income generated from each forestry sub-sector, locally, regionally and provincially.”

Target	Results
Local/Regional – \$7,424,905 Provincial – \$10,997,557 (+/-10%)	Local/Regional- \$3,335,293 Provincial-\$4,940,141

Background Info

Local income statistics used the regional multiplier with the DFA harvest levels. Regional and provincial income statistics used the TSA harvest levels and the appropriate multiplier from TSR3 reporting (income generated per 1000 m³ harvested).

Invermere TSA – \$ 23,900/’000 m³ Provincially - \$35,400/’000 m³

Why off Target? – Radium Indefinite closure reduced actual cut in 2009.

What are we doing about it? – Keeping the mill and woodlands “start ready”.

Measure 4-2.3 Indirect/Induced employment and income

The measure reads; “Indirect/Induced employment and income estimates locally, regionally and provincially.”

Target	DFA Results
Indirect/Induced Employment: Local/Regional – 62 py Provincial – 264 py	Local/Regional- 27.9py, \$879,178 Provincial-118.6py, \$3,809,770
Indirect/Induced Income: Local/Regional – \$1,957,192 Provincial – \$8,481,167 (+/- 10%)	

Why off Target? – Radium Indefinite closure reduced actual cut in 2009.

What are we doing about it? – Keeping the mill and woodlands “start ready”.

Background Info

Local statistics used the regional multiplier with the DFA harvest levels. Regional and provincial statistics used the TSA harvest levels and the appropriate multiplier from TSR3 reporting (person years of employment, or income generated per 1000 m³ harvested).

Local/regional = 0.20 PY’s/’000m³, Invermere TSA – \$ 6,300/’000 m³

Provincial = 0.85 PY’s/’000m³ (includes local/regional) Provincially - \$27,300/’000 m³ (includes local/regional)

Measure 4-2.4 Local contributions of spending

The measure reads; “The percentage of dollars spent locally from the forest sector in proportion to total expenditures.”

Target	Canfor Results	BCTS Results
Greater than x% (+/- 10%) Establish baseline over 5 years	Pending - Year 4 of 5 data collection.	BCTS did not spend any directed dollars in the TSA.

Why is this pending? – Still collecting data for 5 year average.

Status of Indicator – Over the last 4 years the local spending range has been from 56- 42%.

Measure 4-2.5 Local Opportunity to Sell Timber

The measure reads; “Opportunities continue to be available for citizens to sell timber to Canfor.”

Target	Canfor Results
50% of milling capacity	Target met - See Table Below

Total Net Production Volume in 2009 for Canfor Radium Division

Source	Volume (m3)	Percent of Total Volume
Canfor Managed Quota (including off-grade)	107,184	47 %
Purchase Volume (Non-quota wood)	120,119	53 %
Volume Used at Radium Sawmill	184,964	81 %
Total External Sales	42,339	19%

Measure 4-2.6 Civic Vitality - Corporate Donations

The measure reads; “Amount of corporate donations/sponsors made to the community per year.”

Target	Canfor Results
1 Donations Baseline 3 yr average (\$4,180)	2009 Target not met. \$0.00

Why off Target? – Corporate policy of all donations through head office and no donations during downturn to conserve cash.

What are we doing about it? – Within our control is “in kind” support. The Woodlands employees of Canfor Radium Hot Springs do volunteer and in kind support as often as we can.

Measure 4-3.1 Fees Paid

The measure reads; “Fees paid by industry to municipal, regional and provincial governments.”

Target	Canfor Results
0 non-compliance or non-conformances with paying fees on an annual basis	Target met.

Measure 4-4.1 First Nations Economic Opportunities

The measure reads; “Number of formal opportunities for local First Nations to enter into contracts with Licensees.”

Target	Canfor Results	BCTS Results
>=1 opportunity on an annual basis	Target met- Eagle Vision, Nupku	Target met. 1 contract to Eagle Vision for archaeology, 1 contract to Nupku for multiphase development.

Measure 4-5.1 Timber Supply Certainty

Target	Results
321,094 m3 (+/- 10%)	<i>Same as 4-1.1. The current AAC for the DFA allows 321,094 m3/yr (effective November 1, 2005) of harvest volume and is projected to remain stable or increase during the planning horizon (base case scenario).</i>

Measure 4-5.2 Economic Sustainability

The measure reads; “The percentage return on capital employed (ROCE) at a primary processing facility or business unit.”

Target	Canfor Results
ROCE > the percentage set for ROCE for the division. Measured over a two year period	<i>Not Achieved. Radium’s divisional ROCE percentage was well below the anticipated divisional ROCE for 2006, 2007, 2008 and 2009 and was below the corporate average ROCE percentage. Very poor lumber markets in 2006-2009 attributed to poor divisional ROCE.</i>

Why off Target? – Costs are exceeding financial benefit. The cost of fibre particularly impacts the operation. Stumpage fees, cost of logging and cost of purchase wood (about 60% of Radium Sawmill is dependent on high cost purchase wood).

What are we doing about it? – We are looking at various ways of reducing our cost structure and doing more with less. Implementing the “Canfor Operating System” and becoming a Lean customer centric company.

Measure 4-6.1 Damaging Events or Agents

The measure reads; “Current assessments of damaging events or agents (current status: risk potential) are maintained.”

Target	Canfor Results	BCTS Results
1 assessment per damaging event or agent	<i>Target met.</i>	<i>BCTS all assessments for Site Plans or silviculture surveys had a pest assessment.</i>

Measure 4-6.2 Natural Disturbance Events

The measure reads; “The percentage of significant detected natural disturbances damaging events threatening the THLB which have treatment plans prepared and implemented.”

Target	DFA Results
1 strategy exists per damaging event or agent	<i>See Measure 2-5.1</i>

Measure 5-1.1 Identification of marketed/commercial non-timber forest resources

The Measure reads; “Number of non-conformances with strategies for commercial non-timber forest products identified in DFA.”

Target	Canfor Results	BCTS Results
0 non-conformances or non-compliance issues with established management strategies for NTFP’s	<i>Target met</i>	<i>Target met</i>

Measure 6-1.1 Local Employment by Economic Sector

The measure reads; “Employment supported by each sector of the local economy (actual and percentage of total employment).”

Target	DFA Results
Local Forestry Average Annual Employment– 263 person years and 19% of total employment sectors (+/- 10%)	Local/Regional- 76 <i>Forestry was 13% in last census. It is reasonable to assume that 2009 was less than 13%</i>
<i>Why off Target? – Radium Indefinite closure reduced actual cut in 2009.</i>	
<i>What are we doing about it? – Keeping the mill and woodlands “start ready”.</i>	

Measure 6-1.2 Income Sources of the Local Economy

The measure reads; “contribution of income sources from each sector of the local economy (actual and percentage of total income).”

Target	DFA Results
Average Local Forestry Annual Income– greater than \$48 700 and 19% of total income sources (+/- 10%)	<i>Average annual income = \$49,196 [target met]</i> <i>Forestry was 13% in last census. Expect that 2009 was less than this.</i>

5 SOCIAL VALUES

The Radium Sustainable Forest Management Plan included several measures to evaluate social criteria. The following provides specifics of each measure, target and results for both Canfor and BCTS.

Measure 7-1.1 Stakeholder Analysis

The measure reads; “Implementation and annual update of a comprehensive stakeholder analysis of tenure holders, residents and interested parties.”

Target	Canfor Results	BCTS Results
Annual Updates	Canfor maintains a stakeholder database.	BCTS maintains a stakeholder database.

Measure 7-1.2 Communication / Participation Plan

The measure reads, “Development and implementation of a communication / participation plan, with early input from a range of stakeholder representatives.”

Target	DFA Results
1 Plan – Date: March 31, 2009	Complete – Will implement once the operation is back up and running.

Measure 7-1.3 Effective Public Advisory Group

The measure reads; “The existence of an effective public advisory group indicated by the satisfaction of advisory group members.”

Target	DFA Results
Satisfaction Survey – average score > 3.5	<i>No PAG satisfaction survey conducted in 2009.</i>
<i>Why off Target? – Oversight.</i>	
<i>What are we doing about it? – Suggest adding this function to the end of each agenda. Discuss with PAG for advice on this.</i>	

Measure 7-1.4 Equitable and Inclusive Deliberation Process

The measure reads; “Conduct of an open public process prior to Government approval of operational plans, or any major amendments.”

Target	Canfor Results	BCTS Results
100% compliant with legal advertising & internal SOP	100% Compliant. In 2009, Canfor completed 1 FSP amendment.	100% Compliant. BCTS 2 referrals of Operational Plans.

Measure 7-1.5 Satisfaction of Reciprocal Knowledge Exchange

The measure reads; “Documentation of open and transparent reciprocal exchange of social values/opinions, their influence on decisions, and participant satisfaction.”

Target	DFA Results
1 Process	Canfor and BCTS have a process in place to refer operational plans to stakeholders and First Nations through letter mailings, face-to-face meetings and written replies to comments received.

Measure 7-2.1 Public Communications

The measure reads; “The number and type of communication, extension and planning activities with the public annually about forest management plans (SFMP and operational plans) and operations.”

Target	Canfor Results	BCTS Results
Minimum 5	52 Communications sent and received in 2009	3 meetings with FN Bands and Nation

Measure 7-2.2 Demonstration of Reciprocal Knowledge Exchange

The measure reads; “Demonstration of reciprocal knowledge exchange (i.e. Local community expresses increased knowledge of SFM and technical expert incorporates local knowledge into forest management decisions/plans).”

Target	Results
Minimum of 1 example of reciprocal knowledge exchange on an annual basis (increasing trend)	<p>1) The Dec 2009 PAG meeting reviewed the New Assessments & Analysis being incorporated into the SFMP</p> <ul style="list-style-type: none"> • HCV4 – High Conservation Values for watersheds • RONV – Range of Natural Variability • RIP – Integrated Riparian Assessment • RARE – Rare & Endangered Species Field book <p>2) Ranching meetings with Peter Feldman resulting in new fencing on Steamboat Mt.</p> <p>3) First Nations Protocol Agreement meetings with Ktunaxa Nation Council</p> <p>4) First Nations meetings with Shuswap Band regarding logs sales specifications, deliverables and curtailed operations</p> <p>5) Information sharing meeting with Ktunaxa at St Eugene Mission where Canfor learned about culture, traditional use and local values.</p> <p>6) Field review meetings with concerned land owners or land users in Lost Dog and Royal Antler Ranch.</p>

Measure 8-1.1 Aboriginal and Treaty Rights

The measure reads; “Compliance with legally established Aboriginal and Treaty Rights,”

Target	Canfor Results	BCTS Results
0 non-compliance incidents in the DFA	<i>Currently there are 0 non-compliance issues with current legal requirements. The Ktunaxa Treaty Council is currently in Treaty negotiation.</i>	<i>Currently there are 0 non-compliance issues with current legal requirements. The Ktunaxa Treaty Council is currently in Treaty negotiation.</i>

Measure 8-1.2 Opportunity to Comment on Plans

The measure reads; “Affected First Nations are provided the opportunity to comment on forest stewardship plans and the SFM Plan”

Target	Canfor Results	BCTS Results
Minimum 1 Opportunity per plan	<i>SFMP- Opportunity to participate and comment on SFMP provided in 2009. FSP- Opportunity provided to all First Nations to comment on FSP amendments.</i>	<i>No FSP amendments consulted on or SFMP consultations.</i>

Measure 8-2.1 Access to Resources for First Nations

The measure reads; “The success in implementing and monitoring management practices related to not impeding access to identified resources for First Nations through strategies articulated in Forest Stewardship Plans (FSP) and/or First Nations/Licensee Agreements.”

Target	DFA Results
0 non-compliance or non-conformance with regard to results or strategies outlined in Forest Stewardship Plans, First Nations Agreements or Contractual Agreements	<i>Management practices in Canfor and BCTS have been 100% compliant with existing Forest Stewardship Plans and operational plans with regard to strategies to not impede access to identified resources for First Nations. No non-compliance or non-conformance issues have been identified.</i>

Measure 8-2.2 Open and Transparent Reciprocal Exchange of Social Values/Opinions

The measure reads; “Demonstration of open and transparent reciprocal exchange of social value/opinions, their influence on decisions, and participant satisfaction with regards to First Nations.”

Target	Canfor Results	BCTS Results
1 Process	<i>Meetings conducted to exchange information. 1) First Nations Protocol Agreement meetings with Ktunaxa Nation Council. 2) First Nations meetings with Shuswap Band regarding logs sales specifications, deliverables and curtailed operations 3) Information sharing meeting with Ktunaxa at St Eugene Mission where Canfor learned about culture, traditional use and local values. 4) Band Meetings to discuss planned harvest activities for 2009- Shuswap band, Akisqinuk Band, Ktunaxa Nation Council, Tobacco Plains Band, St Maries Band</i>	<i>Meetings conducted and planned meetings to exchange information.</i>

Number and type of communication activities with First Nations in 2009

Type of Communication or Planning Activity-2009	Details	Number
Canfor	<ul style="list-style-type: none"> FIA information exchange and review and comment opportunities KNC Protocol Agreement Meetings Ktunaxa Information sharing/conservation initiatives workshop Lumber donations to Akisqinuk Band Band Meetings to discuss planned harvest activities for 2009- Shuswap band, Akisqinuk Band, Ktunaxa Nation Council, Tobacco Plains Band, St Maries Band 	9
BCTS	Meeting with Ktunaxa for Op plans (2 plans). Cultural exchange attended with Shuswap.	3
Grand Total		12

Measure 8-3.1 Consideration and Accommodation of Known First Nations Cultural Issues

The measure reads; “Forest management plans demonstrate consideration and accommodation of identified First Nations cultural issues by protecting or enhancing sensitive areas/features.”

Target	Canfor Results	BCTS Results
0 non-compliance or non-conformance with forest management plans that include strategies to accommodate culturally sensitive areas	<p><i>Operations have been 100% compliant with FSP strategies and operational plans. No non-compliance or non-conformance issues have been recorded in 2009.</i></p> <p><i>No AIA's were completed in 2009 due to curtailed operations. All blocks harvested in 2009 are compliant with AIA prescriptions.</i></p>	<p><i>Operations have been 100% compliant with FSP strategies and operational plans. No non-compliance or non-conformance issues have been record in 2009.</i></p> <p><i>Number of blocks with AIA's Completed = 1 Block and Roads.</i></p> <p><i>Number of blocks compliant with Site Plan Strategies for AIA concerns = 1 Block and Inblock road.</i></p>

Measure 8-3.2 First Nations interests in Non-Timber Forest Products

The measure reads “Forest management plans demonstrate consideration and accommodation of First Nations' rights and interests in known Non-Timber Forest Products (NTFPs).”

Target	Canfor Results	BCTS Results
100% of forest management plans include strategies to accommodate rights and interests in known NTFP	<p><i>Operations have been 100% compliant with FSP strategies and operational plans. No non-compliance or non-conformance issues have been record in 2009 with known Non Timber Forest Products.</i></p>	<p><i>Operations have been 100% compliant with FSP strategies and operational plans. No non-compliance or non-conformance issues have been record in 2009 with known Non Timber Forest Products.</i></p>

Measure 8-4.1 Accessibility of Data Showing Baseline Cultural Uses

The measure reads; “Accessibility of plans, maps, and/or visual simulations showing baseline cultural uses of local forest resources.”

Target	Results
100% of areas proposed	<p><i>Canfor and BCTS had limited access in 2009 to plans and maps that show baseline cultural uses of local forest resources. Archaeological Overview Mapping has been provided for use by the licensees. Canfor is working with the Ktunaxa Nation Council on a protocol agreement that will address this measure.</i></p>

Measure 8-4.2 Communication to First Nations

The measure reads; “Accessibility of current plans, maps, and/or visual simulations prior to government approval that outline logging details such as cutting areas, road construction and include temporal aspects.”

Target	Canfor Results	BCTS Results
100% of plans and maps are available	<p><i>All plans have been made accessible to First Nations prior to government approval.</i></p> <p><i>100% compliant. In 2009, Canfor completed 1 Forest Stewardship Plan amendment. Additionally, Canfor has reviewed detailed maps outlining 2009 planned cutblocks, roads and single load harvesting areas at meetings with the local First Nations (Shuswap, Akisqinuk, and Ktunaxa Tribal Council).</i></p>	<p><i>100 % Compliant. BCTS completed two referrals with Shuswap and KKTC/ Akisqinuk.</i></p>

Measure 8-4.3 Meaningful First Nations Participation

The measure reads; “Degree of meaningful First Nations participation enabled through culturally appropriate opportunities for inclusive participation.”

Target	Canfor Results	BCTS Results
0 non-compliance or non conformance with legal requirements	<p><i>All plans have been made accessible to First Nations prior to government approval.</i></p> <p><i>100% compliant. 0 non-compliance or non conformance issues were recorded in 2009.</i></p>	<p><i>100% compliant. BCTS completed referrals of 2 Operational Plans.</i></p>

Referrals to First Nations by Canfor and BCTS

Type of Event-2009	Details	Legally Required	Number
Canfor			
FSP Amendment	Amendment referred to local First Nations (Shuswap, Akisqinuk, and Ktanaxa Tribal Council).	Yes	1
CP and RP development review	Canfor has reviewed detailed maps outlining 2009 planned cutblocks, roads and single load harvesting areas at meetings with the local First Nations (Shuswap, Akisqinuk, Tobacco Plains, and Ktanaxa Tribal Council).	No	1
BCTS			
Operational Plans	BCTS consulted on 2 operating plans. These plans spanned the calendar year 2008-2009 and 2009-2010		2
Grand Total			4

Measure 8-4.4 First Nation’s Understand the Resource Plan

The measure reads; “Degree of First Nations comprehension of management plan and monitoring information.”

Target	Results
Minimum of 1 example of comprehension of a management plan on an annual basis (increasing trend)	<ol style="list-style-type: none"> 1) <i>The Shuswap FRO licence to the FSP. There was a very high comprehension level by the bands of the amendment and the affect on their relationship with Canfor.</i> 2) <i>Protocol meetings with Ktunaxa Nation Council have shown a high degree of understanding of Canfor’s FSP and SFMP processes and requirements for First Nations involvement. The KNC have prioritized Canfor discussions based on this knowledge</i>

Measure 9-1.1 Inventory of Recreation

The measure reads; “An inventory of interpretive forest sites, recreation sites, recreation trails and features will be made.”

Target	DFA Results
Maintain database as required	<i>A Database is maintained that identifies interpretive forest sites, recreation sites, recreation trails and features as well as their associated management objectives. These features are also spatially identified. Updates were included into spatial database.</i>

Measure 9-1.2 Maintain Current Condition - Recreation Sites/Facilities

The measure reads; “Existing interpretive forest sites, recreation sites and recreation trails and their associated objectives, as identified in Measure 9.1.1, will be maintained to their current condition following forestry activities in the area.”

Target	Canfor Results	BCTS Results
0 non-compliance or non-conformance with established interpretive forest sites, recreation sites and recreation trails and their associated objectives	<i>0 non-compliance or non-conformance issues have been recorded to the site plans and recreation strategies or standards. See FMS Annual Management Review 2009.</i>	<i>0 non-compliance or non-conformance issues have been recorded to the site plans and recreation strategies or standards.</i>

Measure 9-1.3 Recreation Management Strategy

The measure reads; “Encourage and participate in the development of a strategy to balance primitive, semi-primitive and developed recreation opportunities (and associated quality of experience).”

Target	DFA Results
Encourage & participate in Recreation / Access planning	<i>Currently, there is no process in place for either Canfor or BCTS to participate in the development of a strategy to balance primitive, semi-primitive and developed recreation opportunities. Canfor and BCTS will discuss this opportunity with the appropriate provincial government in future years.</i> <i>Canfor maintains access to over 1,800 km of roads in its operating area. Access barriers are established on 5 roads as shown in its FSP.</i> <i>Additionally, recreational trails and features are managed/verified on the Site Plan Checklist as part of the Canfor FMS. Recreational users regularly communicate with Canfor. These information exchanges are recorded in the Creating Opportunities for Public database.</i>

Measure 9-2.1 Compliance with Visual Quality Objectives (VQO)

The measure reads; “The percentage that forest management complies with existing Visual Quality Objectives (VQO’s) or other visual management approaches established by the BC Ministry of Forests for the area.”

Target	Canfor Results	BCTS Results
0 Non-conformance or non-compliance	<i>No non-compliance or non-conformance issues have been recorded in 2009 to the site plans and VQO strategies or standards.</i>	<i>No non-compliance or non-conformance issues have been recorded in 2009 to the site plans and VQO strategies or standards. BCTS had one block in scenic areas which was. 29.54 ha</i>

Measure 9-2.2 Visual Stewardship Outside Established VQO Areas

The measure reads; *“In areas outside established VQOs but in community viewsheds or major travel corridors to recreation use areas, demonstration of visible stewardship (i.e. explanatory signage, high standards of clean-up along roadsides, landscape design procedures, and modified harvesting procedures)”*

Target	Canfor Results	BCTS Results
Demonstration of appropriate practices to manage localized visuals. Documentation of mechanism.	<i>No non-compliance or non-conformance issues have been recorded in 2009 to the site plans and VQO strategies or standards.</i>	<i>No non-compliance or non-conformance issues have been recorded in 2009 to the site plans and VQO strategies or standards. BCTS had one block in scenic areas.</i>

Measure 9-3.1 Management – Unique Sites or Features

The measure reads; *“Existing unique sites, features and protected areas and their associated objectives, will be managed according to their associated management strategies during primary forest activities in the area.”*

Target	Canfor Results	BCTS Results
0 non-conformances or non-compliance with management strategies	<i>No non-compliance or non-conformance issues have been recorded in 2009 to the site plans with regard to unique sites or features.</i>	<i>No non-compliance or non-conformance issues have been recorded in 2009 to the site plans with regard to unique sites or features.</i>

Measure 9-4.1 Written Safety Policies – Implemented and Effective

The measure reads; *“Worker safety program for employees and contractors implemented periodically reviewed and improved (Canfor).”*

Target	Canfor Results	BCTS Results
1 safety program in place	<i>Canfor is registered as SAFE certified company with its existing safety program. Certification maintained in 2009.</i>	<i>BCTS was Safe Company certified in 2009</i>

Measure 9-5.1 Watershed Assessment

The measure reads; *“Hydrological Assessments are completed and regularly updated by a Qualified Registered Professional (QRP) in consumptive use watersheds.”*

Target	Canfor Results	BCTS Results
Operational plans follow the recommendations in the Hydrological Assessment and if indicated, Channel Assessments and/or Drainage Plans are completed by a QRP	<i>No blocks in domestic or community watersheds</i>	<i>No blocks in domestic or community watersheds</i>

Measure 9-5.2 Consistent with Riparian Management Strategies

The Measure reads; *“Percent of primary forest activities consistent with riparian management strategies for reserve and management zones specified in a FSP.”*

Target	Canfor Results	BCTS Results
0 Non-conformance or non-compliance with site plan and Forest Stewardship Plan riparian management strategies.	<i>0 non-compliance or non-conformances were recorded in 2009 with regard to site plan commitments and riparian strategies specified in the FSP.</i>	<i>0 non-compliance or non-conformances were recorded in 2009 with regard to site plan commitments and riparian strategies specified in the FSP.</i>

Measure 9-5.3 Stream Crossings

The measure reads; “Stream crossings are established and maintained according to the requirements for each stream class.”

Target	Canfor Results	BCTS Results
0 Non-conformance or non-compliance with site plan and FSP riparian management strategies.	0 non-compliance or non-conformances were recorded in 2009 with regard to commitments and riparian strategies as required by the FSP	0 non-compliance or non-conformances were recorded in 2009 with regard to plan commitments and riparian strategies as required by the FSP

6 SUMMARY OF ACTIONS AND RECOMMENDATIONS

Targets Not Met	
Ecological	1-2.3 Road Density - Recent Site Plans, and the assumptions used in the project above show this indicator trending towards 5%. New Site Plans minimize permanent access.
	1-3.1c Coarse Woody Debris (CWD) on harvested areas in the THLB - Meet with operations to discuss and problem solve this issue.
	1-6.2 Genetic Variability Natural regeneration - In 2010 blocks are being risk rated and some left for natural regeneration.
Economic	4-2.1, 4-2.2, 4-2.3, 4-2.4 “CUTTING THE CUT” - Keeping the mill and woodlands “start ready”.
	4-2.6 Civic Vitality - Corporate Donations - Within our control is “in kind” support. The Woodlands employees of Canfor Radium Hot Springs do volunteer and in kind support as often as we can.
	4-5.2 Economic Sustainability- We are looking at various ways of reducing our cost structure and doing more with less. Implementing the “Canfor Operating System” and becoming a Lean customer centric company.
	6-1.1 Local Employment by Economic Sector - Keeping the mill and woodlands “start ready”.
Social	7-1.3 Effective Public Advisory Group - Suggest adding Satisfaction Survey to the end of each agenda. Discuss with PAG for advice on this.
Targets Pending	
Ecological	1-2.2 Interior Forest Condition - There are plans to complete this report within the first 2 years of Radium start-up.
	2-2.3 Long-term Detrimental Soil Disturbance - Still accumulating base line data as this is a 5 year measure. This will be reported in the 2011 Annual Report
	3-1.2, 3-2.1, 3-3.1 “CARBON MEASURES” - There is much beyond our control on how this will be measured. It is desirable to measure this consistently across the province. Holding off on target until this is settled. Carbon is at its maximum storage over the TSA as per the Carbon Phase 2 Report.
Economic	4-2.4 Local contributions of spending - Still collecting data for 5 year average. Over the last 4 years the local spending range has been from 56- 42%.